

CAA Theatre Fact Sheet

Updated: 01/04/2024

651 Yonge Street
Toronto ON M4Y 1Z9 CANADA
(416) 928-5963



CAA THEATRE

651 Yonge Street, Toronto, ON, M4Y 1Z9
416.593.0351 x2000

POSITION	CONTACT NAME	EMAIL	CONTACT NUMBER
Director of Production	Steve Rebbeck	srebbeck@mirvish.com	416.593.0351 x1067
Production Dept. Manager	Desiree Proveau	dproveau@mirvish.com	416.539.0351 x1023
Production Manager	Zach Fedora	zfedora@mirvish.com	416.593.0351 x1022
Theatre General Manager	Jason Powell	jpowell@mirvish.com	416.593.0351 x2011
FOH Manager	Marie Holowaty	mholowaty@mirvish.com	416.593.0351 x4011
Assistant FOH Manager	Amy Meyers	ameyers@mirvish.com	416.593.0351 x4012
Box Office Manager	Gerard Raju	graju@mirvish.com	416.593.0351 x4001
Ticketing General Manager	James (Jim) Aldridge	jbaldridge@mirvish.com	416.593.0351 x1001
Director of Communications	John Karastamatis	johnk@mirvish.com	416.593.0351 x1027
Director of Finance	Camillo Casciato	ccasciato@mirvish.com	416.593.0351 x1008
Director of Sales and Audience Services	Young In Turner	yturner@mirvish.com	416.593.0351 x1013
Director of Labour Relations	Mark Lavaway	mlavaway@mirvish.com	416.593.0351 x1033



House Crew

Head Technician - Carpenter	Oliver Churchill	ochurchill@mirvish.com
Head Technician - Electrician	Ashton Vetter	avetter@mirvish.com
Head Technician - Audio	Paul Bourgeois	pbourgeois@mirvish.com

Union Representation

Stagehands	IATSE #58	416-364-5565
Wardrobe & Hair	IATSE #822	416-622-9000

Dimensions

Building

Total square footage:	20 000 sq.ft. (1872 sq.m.)
Total building footprint:	7000 sq.ft.
Building Length:	140'-0" (42.5 m)
Building Width:	50'-0" (15.2m)

Auditorium

Total depth of auditorium: (from front of stage to last row of seats on mezzanine level)	80'-0" (22.8 m)
Total width:	46'-0'
Total height: (bottom of catwalk to orchestra floor)	40'-0" (14.0 m)
Depth (orchestra level): (from stage to rear of last row of seating)	65'-0" (19.8 m)
Seating row depth:	3'-0" (926 mm)
Square footage: (orchestra and balcony)	5000'

Stage

Depth:	21'-4" from plaster line
Apron:	3'-8" from plaster line
CL to SR Wall:	23'-1"
CL to SL Wall:	23'-3"
CL to SR Catwalk:	18'-1" (6.7 m)
CL to SL Catwalk:	18'-3" (6.7 m)
Width:	46'-4'
Height:	45'-0'
Proscenium width:	36'-0"
Proscenium depth:	18'-0"
Proscenium height:	24'-0"
Fly space width:	36'-0"
Fly space depth:	21'-0"
Trap door:	n/a
Band loft width (lower):	29'-7"
Band loft depth (lower):	6'-7 ½"
Band loft height (lower):	10'-0" above stage deck
Band loft width (higher):	8'-10"
Band loft depth (higher):	6'-7 ½"
Band loft height (higher):	14'-6" above stage deck

Please see "CAA Plan and Section" located on the CAA Theatre page at www.mirvishproductions.com/theatres/caa-theatre for drawings (vwx, dwg, pdf).

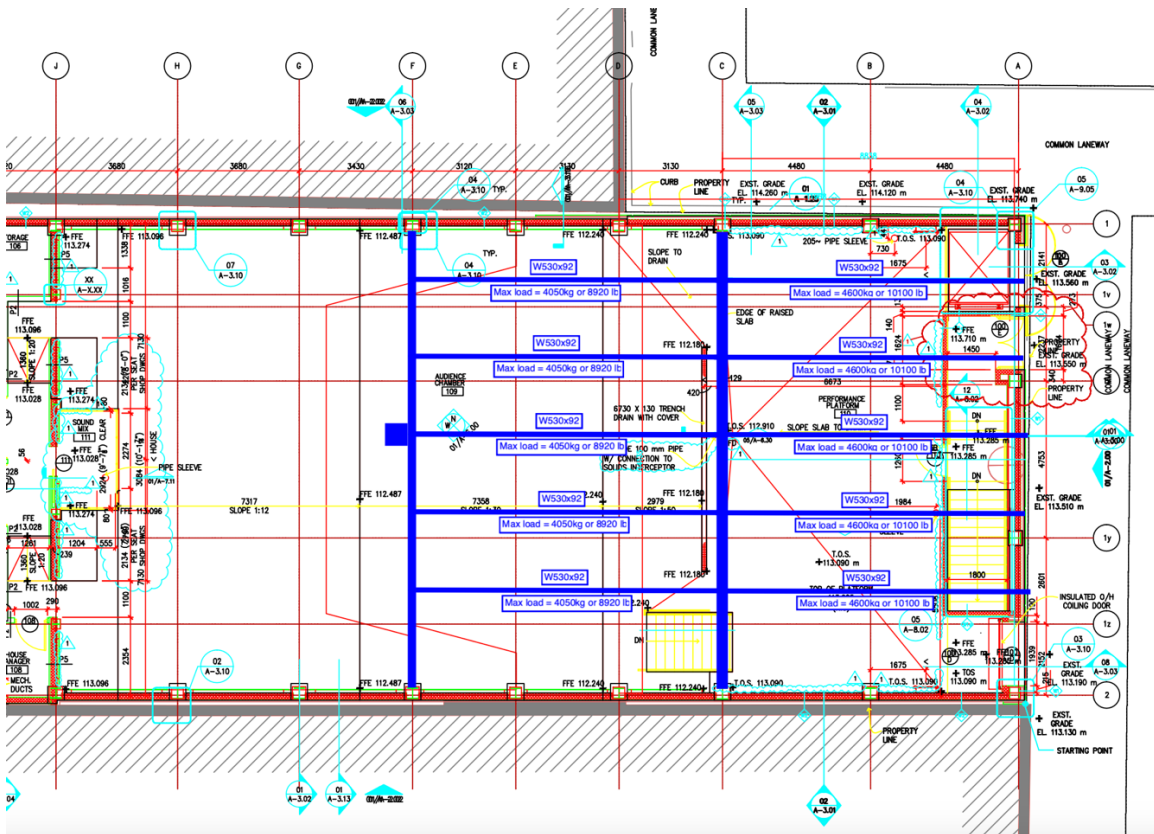
Fly System

System:	JR Clancy Powerlift Automated Rigging
Number of Linesets:	11
Operation:	Stage right on deck
System Pipe Length:	34'0"
Weight Capacity:	2'000 lbs.
Speed:	Up to 180 fpm (0.9 m/s)
Maximum out trim:	41'-4" (6.7 m)
First lineset @:	1'8 3/4" from plaster line
Last line set @:	22'1 1/2" from plaster line
Dist. btwn. linesets:	Varied. 6 1/2" – 3'10 1/2"

FOH & Forestage Rigging Points

There are 5 horizontal I-beams on the ceiling that run parallel with the stage deck and continue into the House. They are 46'10" from deck level and each has a max load of 4050kg or 8920 lbs.

- #1 – 7' further offstage stage right from #2.
- #2 – 8'5" offstage stage right.
- #3 – Centerstage.
- #4 – 8'5" offstage stage left.
- #5 – 7' further offstage stage left from #4.



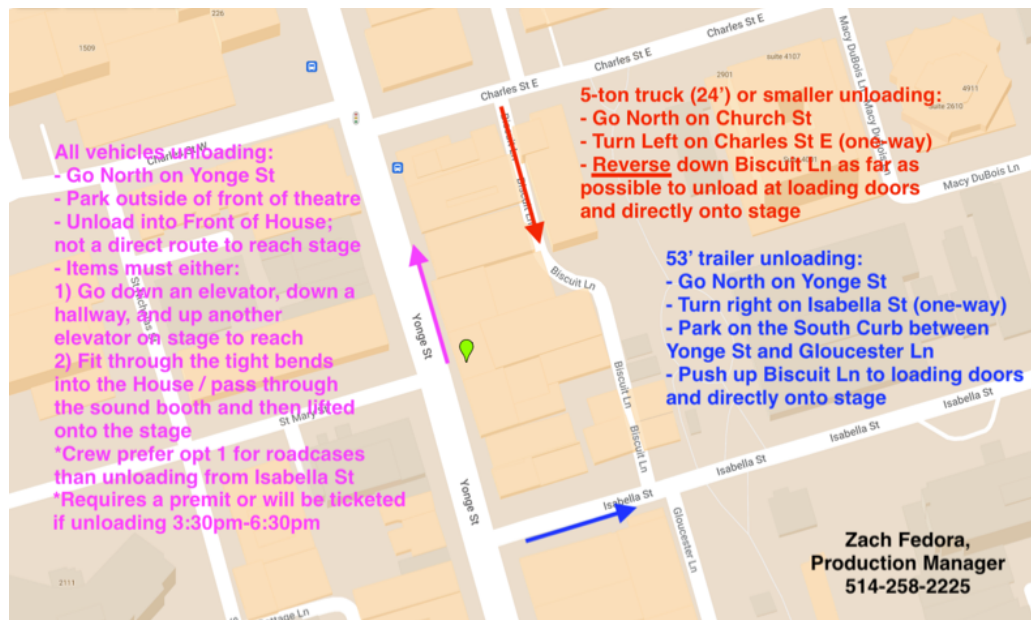
Stage Loading & Trucking Access

Loading door and elevator are located on the public alley behind the theatre, Biscuit Ln. Both points of ingress are level with the stage deck.

Service elevator: 68" W X 95" H X 71" D

Loading door: 76" W X 118" H

Access to this alley is one of two ways depending on trucking:



Artists Stage Entrance

Key fob-controlled grey access door adjacent to the front entrance doors on the left as well as the loading doors at the back of the theatre.

Seating

- 3 Floors of comfortable fixed seating
- 428 seats in the orchestra level (or 418 +5 wheelchairs)
- 276 seats in the mezzanine level

Please see "CAA Theatre Seating (pdf)" located on the CAA Theatre page at www.mirvishproductions.com/theatres/caa-theatre.

Electrical Equipment

Dimming and Control	No Lighting Equipment available.
Lighting Instruments	No Lighting Equipment available.
Cable	No Lighting Equipment available.

All required lighting gear is rented through a vendor or provided by the production.

Electrical Information

Here is a list of all the usable electrical services and what they are currently used for. This is not including individual wall circuits from main building power, just dedicated power for lighting, audio, video, etc. It also doesn't include tech power services that cannot be plugged into or modified. Please contact the venue's Production Manager for more information, if required.

US Catwalk

400a - 96x 2.4k dimmers + 24x 2.4k dimmers

400a - Moving light power

200a - Automated linesets

Booth

100a – Empty

100a - Audio power

2x 30a C-3 Circuits for followspot power

Stage

100a circuit box 6x circuits in stage pin, twist and u-ground

Sound Equipment

Please see "CAA Audio Set Up 09.12.16" and "CAA Audio Schedule A 09.12.16" located on the CAA Theatre page at www.mirvishproductions.com/theatres/caa-theatre. There is a weekly rental cost made to the vendor for when the system is in use.

Soft Goods

Please contact the venue's Production Manager for a soft goods inventory.

Backstage Information

Dressing Rooms

#1 – 2 to 3 persons, mirrors, make-up counters, sink, below stage.

#2 – 2 or 3 persons, mirrors, make-up counters, sink, below stage.

#3 – N/A, no make-up counters, mirrors, or facilities, below stage. Equity cot room.

#4 – 5 or 6 persons, mirrors, make-up counters, shower, toilet, sink, below stage.

#5 – 4 of 5 persons, mirrors, make-up counters, shower, toilet, sink, below stage.

Other Backstage Rooms

Greenroom

Includes a kitchen with fridge, sink, microwave, and coffee maker, table, chairs, and couches. 1 level below stage.

Wardrobe Facilities

Laundry room with 3 washers and 3 dryers. 1 level below stage.

Props & Carp

Large shop. 1 level below stage.

Stage/Company Management Office

Multiple desks and office accessories. 1 level below stage.

Washroom

One single stall unisex washroom for multi-purpose in the restricted access area. 1 level below stage.

Theatre Information

Stage Access

The two means of ingress to backstage are: door leading from restricted access stairwell to center up stage, and service elevator. A third can be added by installing a staircase leading from the House.

Parking

Parking for all vehicles must be arranged off-site, street parking and commercial garages are close by.